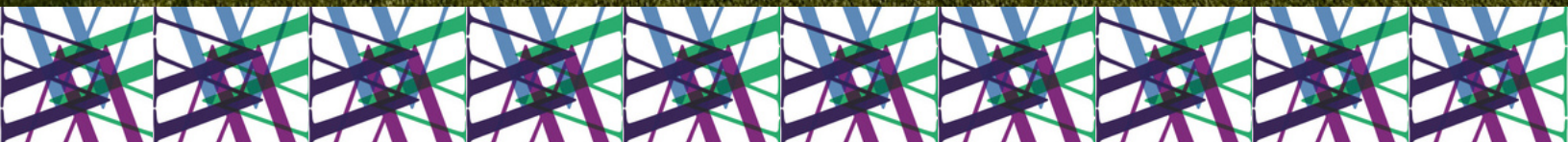




Women's
Development
Collaborative

BUILD • INSPIRE • TRANSFORM • REAL ESTATE

Annual Sponsorship Opportunities 2026



What We Do:

Women's Development Collaborative (WDC) - Advancing women's success in real estate development

BUILD

Empower women developers
and advance women-led projects



INVEST

Expand access to capital
and build wealth



INSPIRE

Promote success, opportunity
and collaboration throughout
the development ecosystem



TRANSFORM

Catalyze and elevate strong,
vibrant communities



Did You Know?



50 years

is how long women have been
empowered to access capital
without a male co-signer.
(since 1974)



37%

of jobs in
Commercial Real Estate
are held
by women.



2.8%

of U.S.
real estate firms
are
women-owned.

What Makes WDC Different?

A push forward. A leg up. The Women's Development Collaborative (WDC) is focused on **advancing women's success, innovation, leadership, and collaboration in real estate development and the entire development ecosystem** that shapes their success.

WDC collaborates with other women-focused real estate initiatives aligned with our mission.

For example, WDC members helped launch the Women's Leadership Initiative of the Urban Land Institute (WLI) and continue to lead initiatives and complementary programs of WLI and other aligned real estate organizations.

Still, **there is a void that only WDC can fill** given our unique mission and what we do to achieve it.



Development Ecosystem



Women's
Development
Collaborative

BUILD • INSPIRE • TRANSFORM • REAL ESTATE

Core Development Industries

DEVELOPMENT



CAPITAL



GOVERNMENT
AGENCIES



ARCHITECTURE,
ENGINEERING,
CONSTRUCTION



LEGAL AND
CONSULTING



BROKERAGE AND
LEASING



Supporting Industries

PROPERTY
MANAGEMENT



MARKET RESEARCH
AND DATA



PROPTech AND
TECHNOLOGY



End-User Industries

RESIDENTIAL
REAL ESTATE



COMMERCIAL
REAL ESTATE



SPECIALIZED
PROPERTIES





Libby Seifel

Founder of Women's Development Collaborative;
Champion and **Advisor** to \$50+ Billion in
development projects to date.

Message From Our Founder:

Supporting women in real estate is a noble cause.

And it's a **wise financial move**.

Women across the globe will control 75% of discretionary spending in the next five years and are increasingly making economic decisions for their families, [per NIQ Research](#).

They're also:

- [earning a record number of advanced degrees](#),
- contributing [\\$3 trillion to the U.S. economy](#) via business ownership, and
- [proving to be patient and intelligent investors](#).

Imagine the value that will bring when women have a stronger impact in the real estate landscape.

That's our goal. Won't you join us?

Consider this:

Women make

90%

of Household
Financial
Decisions
[\(click for source\)](#)

Women will hold over

\$100
Trillion

in Assets
by 2025
[\(click for source\)](#)

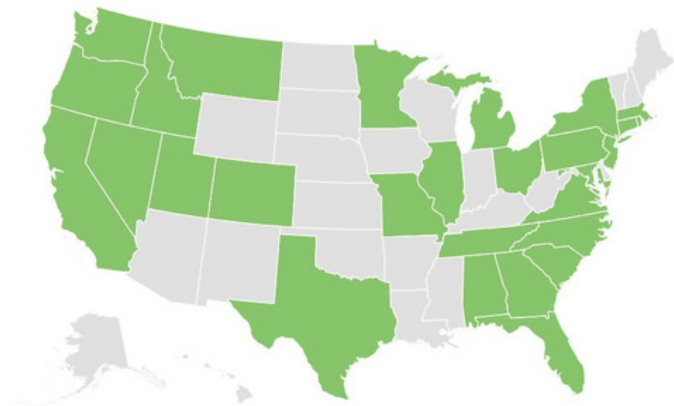
U.S. women-owned firms

growing
200%
faster

than
all other firms.
[\(click for source\)](#)



Our Reach



We network with **1,000+** real estate professionals
spanning **more than \$1 billion** in
development projects across the U.S. and Canada

And we're growing...



Our Impact

3,000+ ATTENDEES

100+ EDUCATIONAL PROGRAMS

200+ SCHOLARSHIPS

**3+ YEARS OF DEVELOPER
PEER GROUP MEETINGS**



The Work **We Need You** To Support:

Scholarships
to Women
Developers

New
**Industry
Learning** for
Women

Valuable
Connections
to advance
projects.

Support for
Students and
**Emerging
Leaders**

Project-
Specific
**Development
Support**

Innovative
Real Estate
**Tools and
Resources**

Total To Raise In 2026: \$150,000

Now is the time for women to build.



In Good Company



This is a partial list of major sponsors that have supported the Women's Development Collaborative.

Examples of Speakers & Professionals In Our Network



Meea Kang
Related California



Linda Mandolini
Eden Housing



Anna Olin
The ZLife Company



MaryAnne Gilmartin
MAG Partners



Robin Zeigler
MURAL Real Estate Partners



Renee McDonnell
IHP Capital Partners

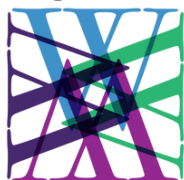


Women's
Development
Collaborative

Ready to join the mission? Become a Sponsor



Sponsor Tiers & Benefits:



Women's
Development
Collaborative

BUILD • INSPIRE • TRANSFORM • REAL ESTATE

Legacy Builder	Change Maker	Tough as MARBLE	Strong as STEEL	Unified as BRICK	Trusted as TIMBER
\$20,000	\$15,000	\$10,000	\$5,000	\$2,500	\$1,000

WDC Spring and Fall In-Person Meetings

Exclusive recognition as Presenting Sponsor of meetings with opportunity to provide branded product	Spring + Fall meetings					
Recognition as Key Program Sponsor of meetings with opportunity to provide branded product		Spring + Fall meetings	Spring or Fall meeting	Spring or Fall meeting		
Registrations or guest scholarships to meetings	10	8	6	4	2	1

WDC Regional and Virtual Programs

Exclusive recognition as Presenting Sponsor at two programs and associated event promotion	2					
Recognition as Key Program Sponsor for one or more programs and associated event promotion		2	2	1	1	
Regional Program registrations or guest scholarships	4	3	2	1	1	

WDC Support and Resources for Developer

Premiere Sponsor of Featured Developer Webpage	1					
Program Sponsor of WDC Developer Peer Group		1				
Program Sponsor of WDC Project Forum			1			

WDC Website and Digital Promotion

Premiere recognition on website and digital promotion	1					
Primary recognition on website and digital promotion		1				
Recognition on website and virtual program			1	1	1	1
Primary recognition on annual WDC Gift Guide	1	1	1	1		

Membership and Scholarships

Exclusive sponsor of 2026 WDC Dana Crawford Memorial Scholarship for Woman Developer* <small>(see next page for details)</small>	1					
WDC Sustaining Memberships for Sponsor Staff	10	8	5	3	2	1
WDC Membership Scholarships for Young Leaders	10	8	5	3	2	1

* Become a WDC Transformer and customize your Sponsor benefits to meet your needs.
Champion members receive Timber benefits.

The Legacy Builder: A Sponsorship Honoring The Real Estate Legacy of Dana Crawford

*A place where we could mark...history
...a wonderful gathering place for...people
from all walks of life, all incomes and all
backgrounds to celebrate the city together.*
-Dana Crawford



Image Credit: History Colorado

Sixty years ago, a dynamic mother of four young boys launched her quest to preserve Denver's historic fabric. Where others only saw abandoned buildings, **Dana Crawford** assembled the right people and secured capital to transform iconic places such as Larimer Square.

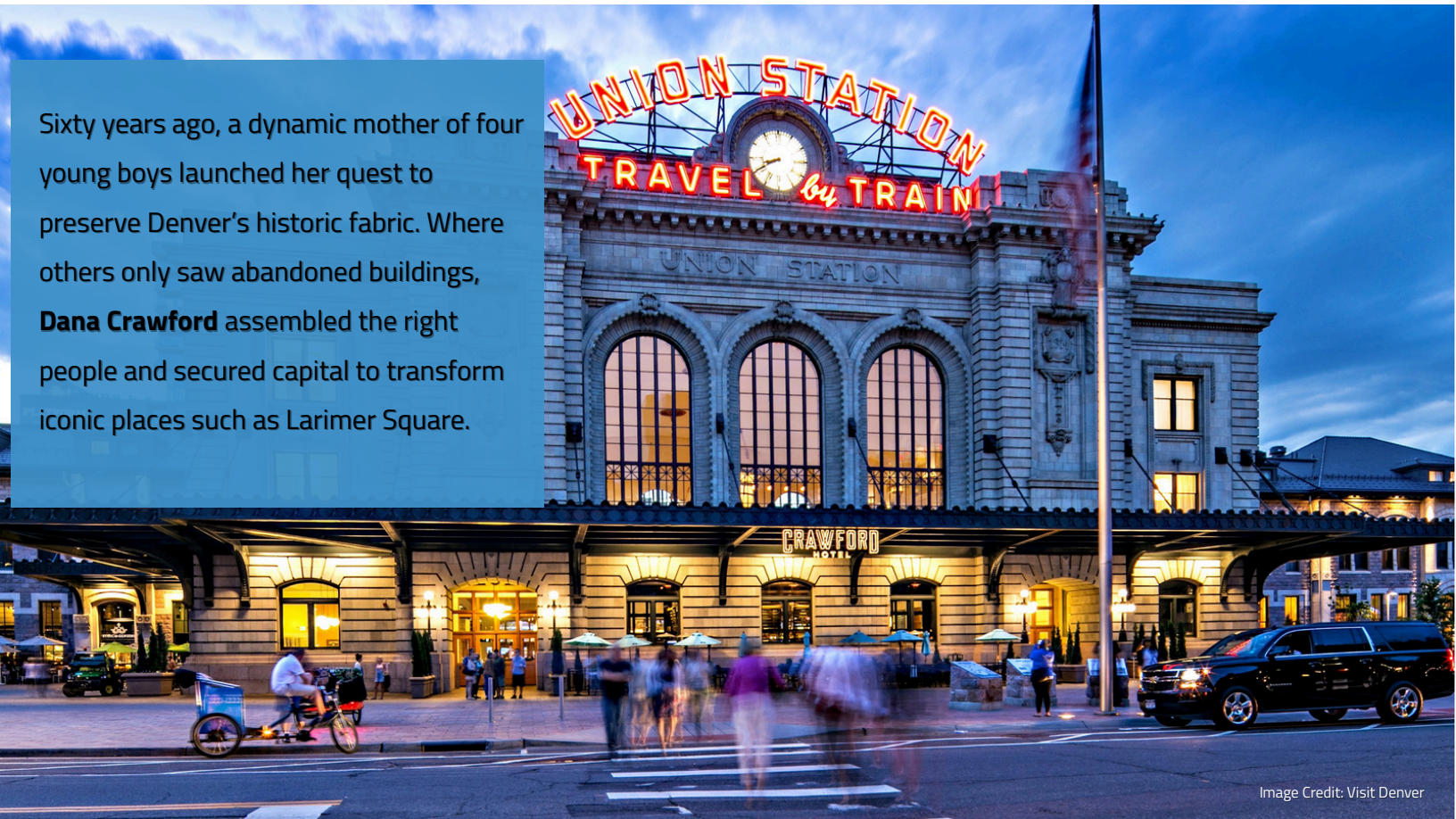


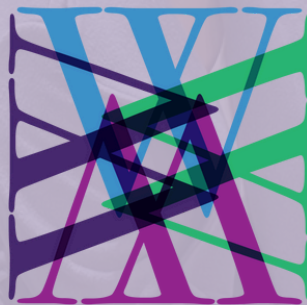
Image Credit: Visit Denver

[Build on Dana's Legacy by Sponsoring WDC](#)

Support the **Dana Crawford Memorial Annual Scholarship** to inspire, promote and grow women developers like her.

Keep Advancing Women's Success in Real Estate Development!

WomensDevelopmentCollaborative.net



Women's
Development
Collaborative

BUILD • INSPIRE • TRANSFORM • REAL ESTATE

[CLICK TO CONTACT US](#)